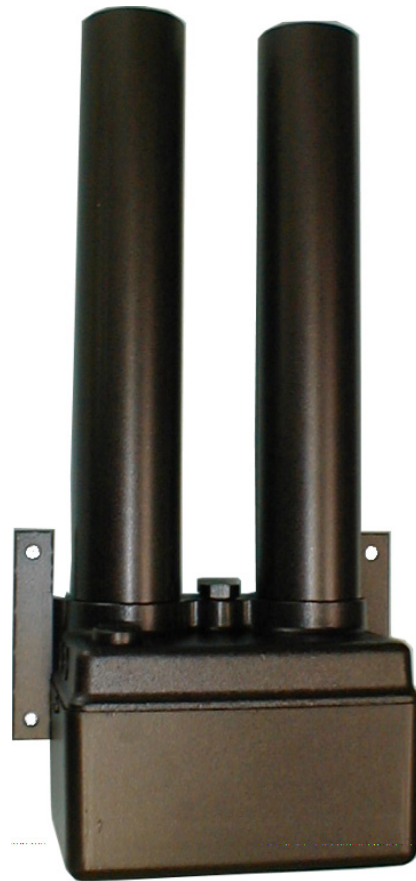


## Features:

- *13X Molecular Sieve media layers for efficient adsorption of CO<sub>2</sub>*
- *Outlet CO<sub>2</sub> levels less than 1 PPM; outlet H<sub>2</sub>O levels less than -100°F dew point.*
- *Easy-change adsorbent/desiccant chambers screw on/off.*
- *Direct acting solenoid valves for positive shifting and reliable flow control.*
- *Ultra-compact size can be mounted in any position.*
- *Fixed orifice design for consistent, troublefree purge flow.*
- *Components are all easily serviced and field replaceable.*
- *Purge mufflers and power cord standard.*

Twin Tower Engineering VCD-Series carbon dioxide adsorbers are designed to remove CO<sub>2</sub> from compressed air for outlet flows up to 99 SLPM (3.5 SCFM). The carbon dioxide adsorber does this by using media beds featuring 13X molecular sieve in a pressure swing adsorption process for a more efficient adsorption of CO<sub>2</sub>. Outlet CO<sub>2</sub> levels less than 1 PPM and outlet H<sub>2</sub>O levels less than -100°F dew point. Adsorbed moisture and CO<sub>2</sub> are vented to atmosphere while dry CO<sub>2</sub> free air is provided at the outlet port.



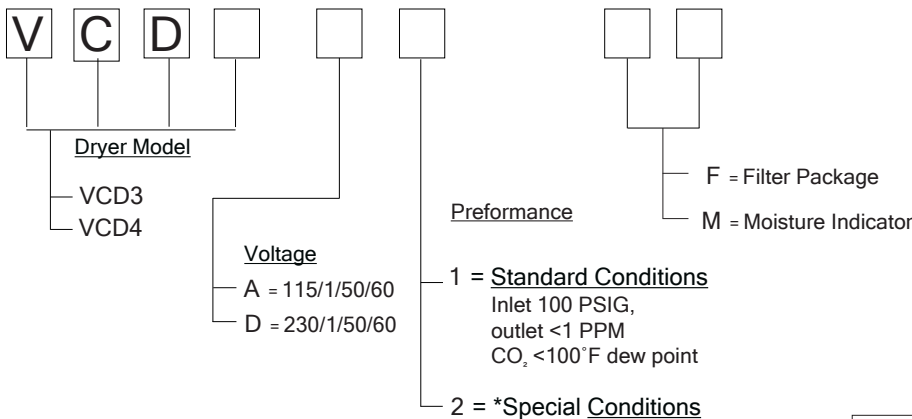
Model Number	VCD3	VCD4
Max Flow Capacities at 100 psig (Liters/minute)		
Inlet Flow	40	95
Purge Flow	17	35
Outlet Flow	23	60
Inlet and Outlet Connections (NPT)	1/4"	1/4"
Dimensions (inches)		
Height	16.1	24.1
Width	8.0	8.0
Depth	4.8	4.8
Weight (pounds)	9	14

## Typical Applications:

- TOC Analyzers
- Continuous Emissions Monitoring
- Environmental Instruments
- FTIR Spectrometers
- Gas Chromatographs
- Laboratory Analyzers
- NMR Spectroscopy
- Zero Air Systems

**All Models:** Available Voltage: 115/1/50/60, 230/1/50/60  
 Maximum temperature: 120°F ambient  
 Maximum operating pressure: 150 PSIG  
 Maximum pressure: 150 PSIG  
 Outlet dew point: -40 °F pressure dew point with 100°F saturated inlet (-100°F optional)  
 Rated Inlet condition: 70°F saturated, 375 ppm CO<sub>2</sub>  
 Recommended filtration on inlet: 5.0 micron filter and 0.01 micron filter

## MODEL NUMBER ORDERING



### \*Options:

#### F-Filter Package Includes:

- 5 micron particulate prefilter
- 0.01 micron coalescing prefilter
- 0.5 micron particulate afterfilter

#### M-Moisture Indicator

- Color change blue (dry) pink (wet)

VCD CO<sub>2</sub> Adsorber/Dryer are standard with power cord and purge muffler.

### \*Special Conditions

For use with non-standard conditions, please specify with your order:

- Inlet pressure: 50 to 150 PSIG
- Inlet flow (l/m) or outlet flow (l/m)

For additional information please go to our web site @ [airdryers.com](http://airdryers.com)



PO BOX 879  
 2150 W. 6TH AVE UNIT P  
 BROOMFIELD, CO 80020  
 TEL 800-700-8537  
 FAX 303-465-9294  
 SALES@AIRDRYERS.COM