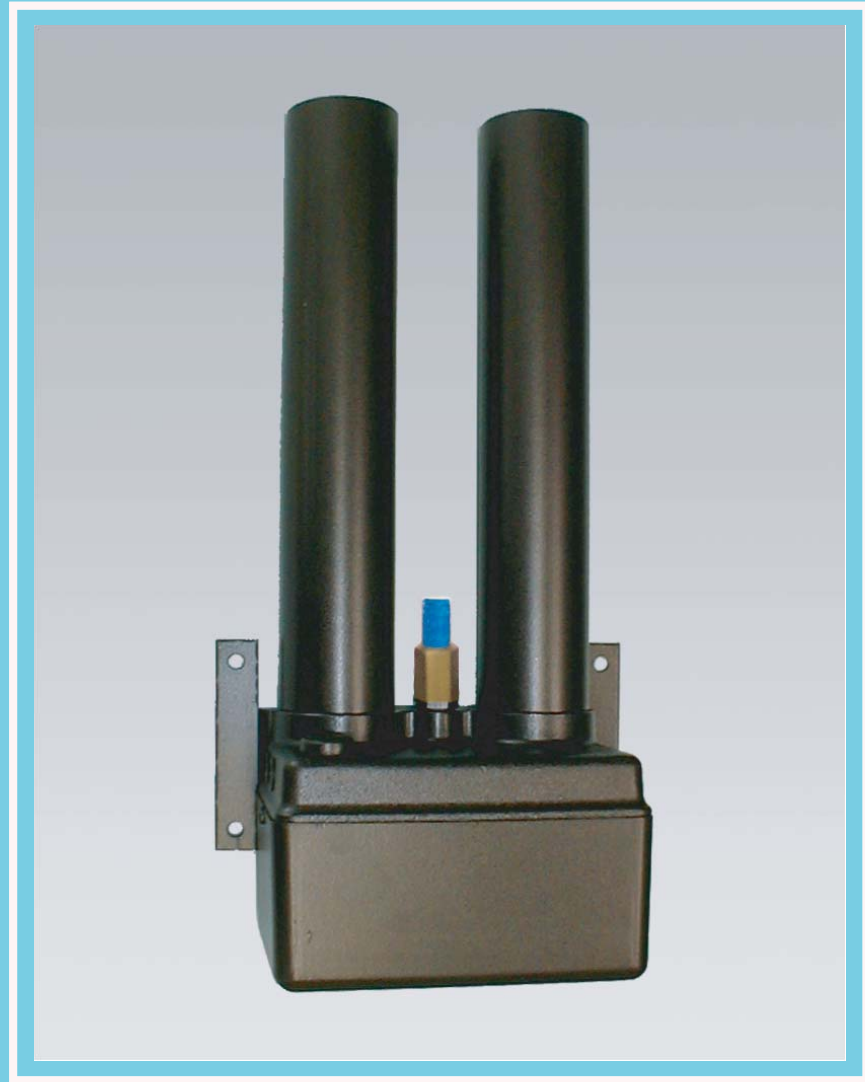


REGENERATIVE
CARBON DIOXIDE
ADSORBER/DRYER



VCD SERIES



**TWIN TOWER
ENGINEERING, INC.**

Design Features:

- 13X Molecular Sieve media layers for efficient adsorption of CO₂
- Outlet CO₂ levels less than 1 PPM; outlet H₂O levels less than -100°F dew point.
- Easy-change adsorbent/desiccant chambers screw on/off.
- Direct acting solenoid valves for positive shifting and reliable flow control.
- Ultra-compact size can be mounted in any position.
- Fixed orifice design for consistent, trouble-free purge flow.
- Components are all easily serviced and field replaceable.
- Purge mufflers and power cord standard.

Typical Applications:

Continuous Emissions Monitoring Systems (CEMS)
 TOC Analyzers
 Environmental Chambers
 FTIR Spectrometers
 Gas Chromatographs
 Laboratory Analyzers
 NMR Spectroscopy
 Zero Air Systems

Specifications:

MODEL NO.	VCD3	VCD4
Max Flow Capacities @ 100 PSIG (liters/minute)		
Inlet	40	95
Purge	17	35
Outlet Flow Available to Application	23	60
Inlet and Outlet Connections (NPT)		
	1/4"	1/4"
Dimensions (Inches)		
Height	16.1	24.1
Width	8.0	8.0
Depth	4.8	4.8
Weight (Pounds)		
	9	14

Ordering Information:

MODEL NUMBER

V C D

- - - - -

CO₂ Adsorber/Dryer Model

VCD3
VCD4

Voltage

1= 115/1/50/60
2= 230/1/50/60

***Options**

F = Filter Package
M = Moisture Indicator

Performance

1 = Standard Conditions - inlet 100 PSIG, outlet <1 PPM CO₂, <-100°F. dew point.
2 = Special Conditions

***ORDERING NOTES:**

Options :

F - Filter Package includes:

- 5 micron particulate prefilter
- 0.01 micron coalescing prefilter
- 0.5 micron particulate afterfilter

M - Moisture Indicator:

- color change blue (dry), pink (wet)

VCD CO₂ Adsorber/Dryers are standard with:

- 6' power cord
- purge mufflers

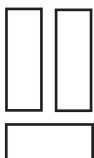
Special Conditions

- for use with non-standard conditions, please specify with your order:
 - inlet pressure: 50 to 150 PSIG
 - inlet flow (lit/min), or outlet flow (lit/min)

All Models:

-Available Voltages:	115/1/50/60, 230/1/50/60
-Maximum operating temperature:	120°F ambient
-Maximum operating pressure:	150 PSIG
-Outlet CO ₂ concentration:	to less than 1 ppm
-Outlet dew point:	better than -100°F
-Rated inlet condition:	70°F saturated, 375 ppm CO ₂
-Recommended filtration on inlet:	5 micron particulate and 0.01 micron coalescing

To help preserve our natural resources, we have limited our catalog to these two pages and offer more detailed information on our website. Please visit us at www.airdryers.com to view this information.



TWIN TOWER
ENGINEERING, INC.

P.O. BOX 879
 2150 W. 6TH AVE., UNIT P
 BROOMFIELD, CO 80020
 TEL 800-700-8537
 FAX: 303-465-9294
www.airdryers.com